

# SDTORK

CONTROLS PVT.LTD.

---

Engineering Precision.  
Powering Progress.



# OVERVIEW

# ABOUT US

---

Established as a pioneering force in valve automation, **SDTORK Controls Pvt. Ltd.**, has been delivering world-class electric actuators solutions across industries for over three decades.

Sdtork Known for engineering innovation, high-quality manufacturing, and a deep understanding of mission-critical applications, we proudly serve sectors including Power, Oil & Gas, Marine, Nuclear, Water Treatment, and Defence.

With a product line engineered to perform in the most demanding environments, SDTORK actuators are installed on naval warships (e.g., INS Vikram, INS Chennai) and integrated into complex industrial systems nationwide.

Founded: 1993

**Mr. Devdas R. Shetty – Founder & Managing Director**

A visionary technocrat with deep industry roots and a passion for mechanical engineering excellence.

**Mr. Sunil P. Kurkute – Director**

A strategic mind driving SDTORK's modern operations, SAP automation, global expansion and passion for electrical engineering excellence.

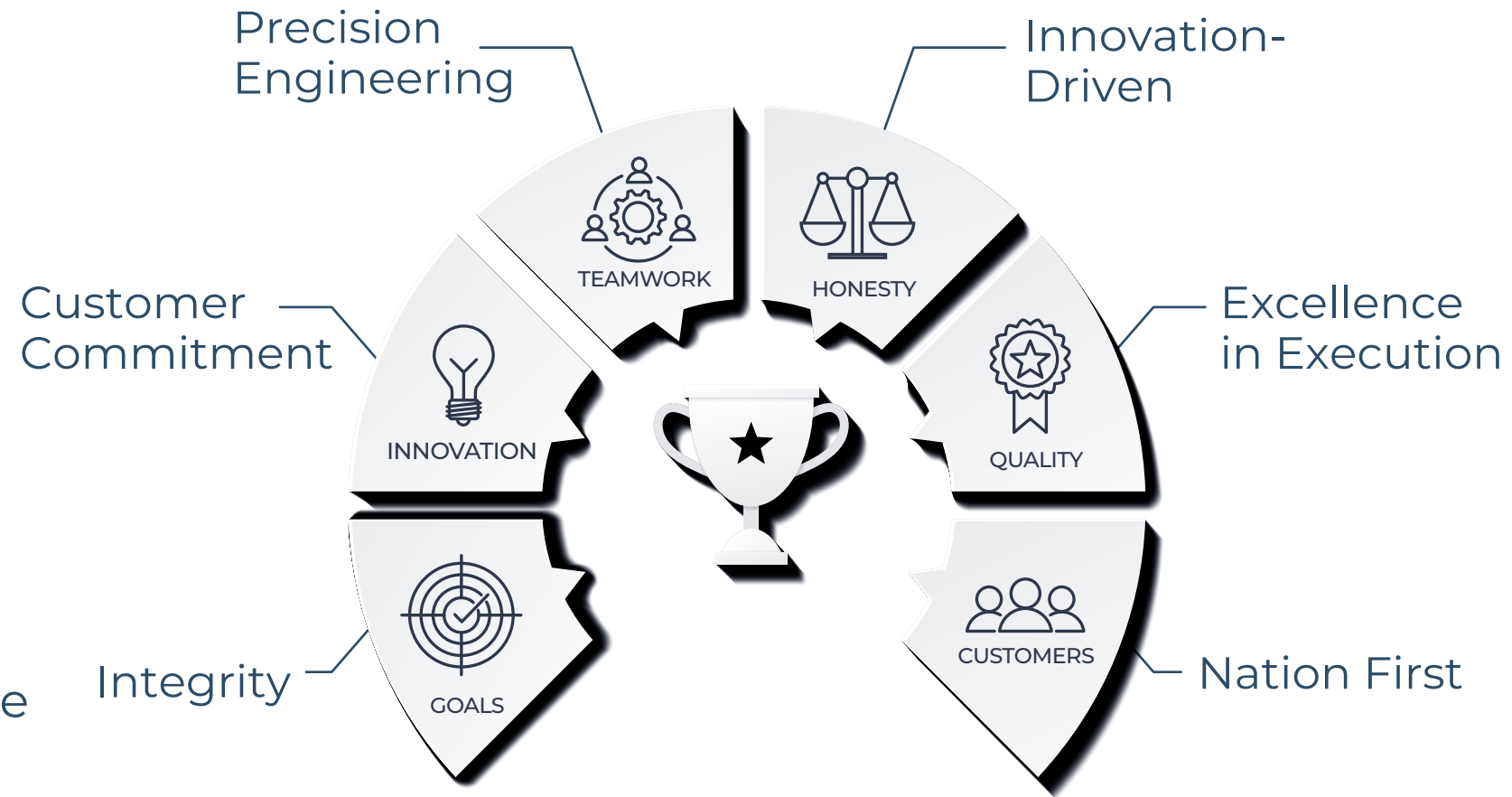
# OVERVIEW COMPANY

## MISSION

“To deliver innovative, reliable, and efficient electric actuation solutions that empower industry through smart automation, safety, and sustainability.”

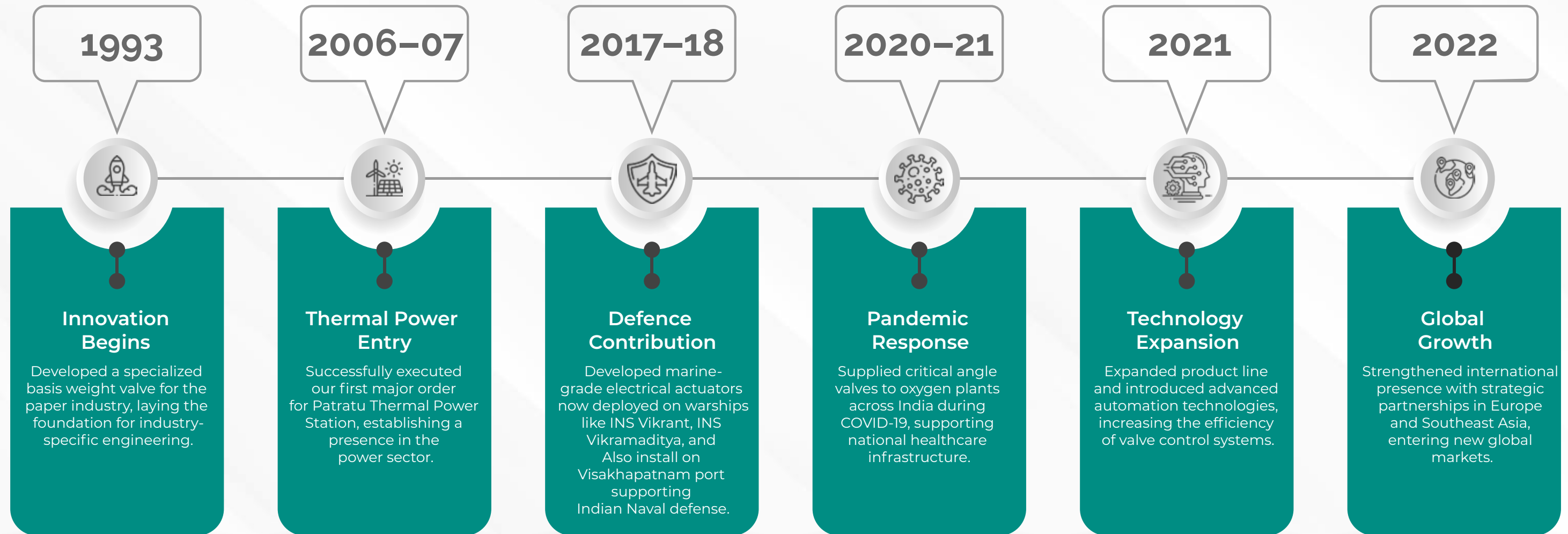
## VISION

To become a globally trusted name in electric actuators, transforming process control with cutting-edge technology and engineering brilliance — Made in India, for the world.



# MILESTONE ACHIEVEMENTS – YEAR BY YEAR

A timeline of dedication, innovation, and impact across industries.



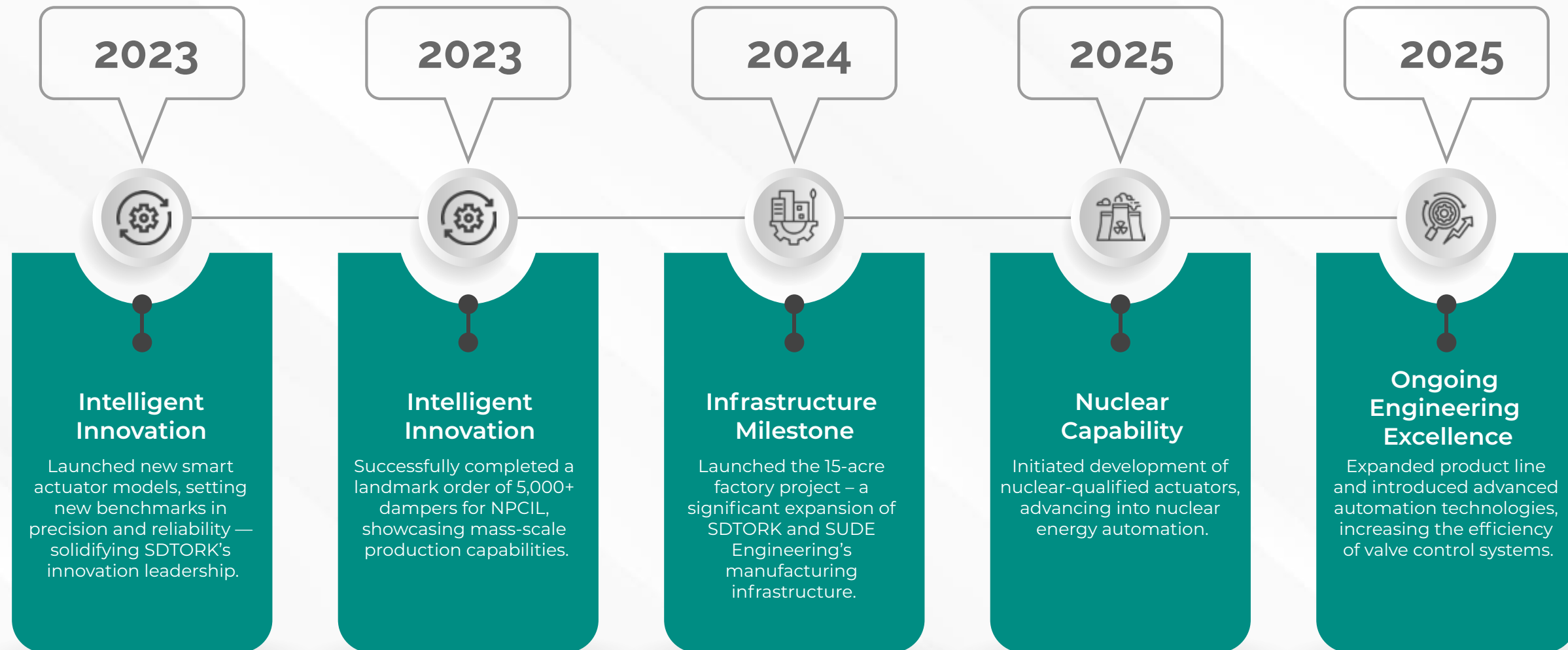
**30+ YEARS**  
ENGINEERING EXCELLENCE

**20+**  
INDUSTRIES SERVED

**15+**  
COUNTRIES SERVED GLOBALLY

# MILESTONE ACHIEVEMENTS – YEAR BY YEAR

A timeline of dedication, innovation, and impact across industries.



**200+**  
SKILLED PROFESSIONALS

**50000+**  
ACTUATORS DELIVERED

**10,000+**  
ACTUATION CYCLES PER PRODUCT

# OUR INFRASTRUCTURE

## Precision Manufacturing & Testing Infrastructure

At SDTORK, our state-of-the-art infrastructure ensures world-class actuator performance and reliability. Our advanced facilities include.

- ✓ CNC & VMC machining centers.
- ✓ Custom actuator assembly lines.
- ✓ Extreme condition testing.
- ✓ Life-cycle performance test.



100% functional testing



Vibration & IP testing



Safety & torque checks



Traceable QC records



## Quality Control & Assurance

Every SDTORK product goes through a multi-stage quality assurance process, ensuring compliance with ISO 9001:2015, CE, and ATEX standards. Our dedicated QC team performs.



# OUR INFRASTRUCTURE

## In-House R&D and Product Innovation

Our dedicated Research & Development lab constantly drives product improvements, focusing on.

- ✓ Custom actuator development
- ✓ Retrofitting & modular upgrades
- ✓ High-performance material testing
- ✓ Nuclear-grade actuator design



- Smart production control ✓
- Inventory & QC tracking ✓
- Sales & service insights ✓
- Compliance-ready records ✓

## Advanced Software & ERP Integration

We manage our production and operations through SAP, aligning all departments from shopfloor to dispatch for real-time tracking and optimization.

# OUR PRODUCT RANGE

Engineered to Perform. Designed to Last.

**Type:** Weatherproof Quarter Turn Electrical Actuator  
(Single Phase)

**Torque Range:** Up to 200 Nm

**Key USPs:**

- ✓ Aluminium alloy body.
- ✓ Stall-duty motor with worm gear.
- ✓ Fit & forget design.
- ✓ Ideal for ball valves, butterfly valves & dampers.

**sdtork**®



**SD-1000 SERIES**

**Type:** Weatherproof Quarter Turn Electrical Actuator  
(Single / Three Phase)

**Torque Range:** Up to 500 Nm

**Key USPs:**

- ✓ Rugged, corrosion-resistant body.
- ✓ Maintenance-free design.
- ✓ High torque with precise rotation.
- ✓ Suitable for outdoor industrial use.
- ✓ Ideal for ball valves, butterfly valves & dampers.

**sdtork**®



**SD-1001 SERIES**

# sdtork®

**Type:** Weatherproof Electrical Actuator  
(DC / Single Phase Quarter Turn)

**Torque Range:** Up to 1000 Nm

**Key USPs:**

- ✓ Lightweight & energy-efficient.
- ✓ Budget-friendly without compromising durability.
- ✓ Ideal for mid-range industrial automation.
- ✓ Single or three phase variants available.
- ✓ Cost-Effective Electric Actuator.

 [www.sdtork.com](http://www.sdtork.com)



## SD-1001 ECO SERIES

**Type:** Flameproof Quarter Turn Electrical Actuator  
(Single/Three Phase)

**Torque Range:** Up to 500 Nm

**Key USPs:**

- ✓ ATEX certified design with spark containment.
- ✓ Built to resist high internal pressure from explosions.
- ✓ Reliable performance in hazardous zones.
- ✓ Precision torque and safe operation.

**sdtork**®



**FSD-1001 SERIES**

# sdtork®

**Type:** Weatherproof Quarter Turn Electrical Actuator  
(Single/Three Phase)

**Torque Range:** Up to 600 Nm

**Key USPs:**

- ✓ Rugged aluminium alloy body
- ✓ Designed to withstand high pressure without damage
- ✓ Fully sealed for outdoor industrial applications
- ✓ Ideal for valves & dampers in harsh weather conditions.



## FSD-1001-EW SERIES

**Type:** Flameproof Quarter Turn Electrical Actuator  
(Single/Three Phase)

**Torque Range:** Up to 600 Nm

**Key USPs:**

- ✓ ATEX certified, explosion-proof housing.
- ✓ IEC60079-0:2017 & IEC60079-1:2014 compliant.
- ✓ Spark-protected enclosure.
- ✓ Ideal for oil & gas, chemical, and explosive environments.

**sdtork**®



**FSD-1001-EX SERIES**

**Type:** Weatherproof Linear Electrical Actuator

**Conversion:** Can't be converted from linear to rotary with help of supplementary attachments.

**Trust Range:** Up to 2500 Kg

**Key USPs:**

- ✓ Precise linear motion control.
- ✓ Ideal for dampers, dosing pump application, gates & sliding valves.
- ✓ Adaptable for rotary applications.
- ✓ Maintenance-free with rugged build.

**sdtork**®



**SD-2000 SERIES**

# sdtork®

**Type:** Heavy-Duty Multi-Turn Electrical Actuator

**Torque Range:** Up to 200Nm . It can be extended upto 3,50,000 using supplementary attachments.

**Key USPs:**

- ✓ Reliable in power plants & industrial automation.
- ✓ Multi-turn operation for large valve sizes.
- ✓ Precision control with overload protection.
- ✓ Optional control modules for integration.



## SD-3000 SERIES

# sdtork®

**Type:** Heavy-Duty Multi-Turn Electrical Actuator

**Torque Range:** Up to 300 to 2000 Nm. It can be extended upto 3,50,000 using supplementary attachments.

**Key USPs:**

- ✓ Reliable in power plants & industrial automation.
- ✓ Multi-turn operation for large valve sizes.
- ✓ Precision control with overload protection.
- ✓ Optional control modules for integration.



## SD-3002 SERIES

**Type:** Multi-Turn Advanced Flameproof Electrical Actuators

**Torque Range:** Up to 200Nm . It can be extended upto 3,50,000 using supplementary attachments.

**Key USPs:**

- ✓ Precise linear motion control.
- ✓ Ideal for dampers, gates & sliding valves.
- ✓ Adaptable for rotary applications.
- ✓ Maintenance-free with rugged build.

**sdtork**®



**FSD-12000 SERIES**

# sdtork®

**Type:** Flameproof Linear Electrical Actuator (Single Phase)

**Trust Range:** Up to 600 Kg

**Key USPs:**

- ✓ Ideal for globe, V-notch ball, diaphragm valves-dosing pump application.
- ✓ Versatile for dampers (multi-louver/VIV)
- ✓ Excellent for regulating control duty.
- ✓ Combines flameproof safety with linear precision.



## SD-HQ SERIES

# GEAR BOX & THRUSTER UNIT

## WG- Quarter Turn/FWG-Full Turn Worm Gear Box

*Torque Range upto 1,50,000 Nm*



## SG-Spur Gear Box

*Torque Range upto 18,500 Nm*



## LTU-Linear Transmitting Unit

*Trust Range upto 1,81,242 Nm*



## BG-Bevel Gear Box

*Torque Range upto 5,400 Nm*



## TU-Thruster Unit

*Trust Range upto 1,81,424 Nm*



# MEET OUR DIRECTORS

---



## Mr. Devdas R. Shetty

Founder & Managing Director

---

The guiding pillar of SDTORK, brings unmatched wisdom and decades of industrial experience. His commitment to quality, discipline, and strategic growth has shaped the foundation of the company. A true mentor and leader, he continues to inspire innovation and excellence across every level of SDTORK.



## Mr. Sunil P. Kurkute

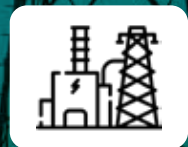
Director

---

The visionary force behind SDTORK, leads with innovation, integrity, and relentless dedication. His deep-rooted expertise in engineering and automation continues to drive the company toward global excellence. Under his leadership, SDTORK has become a trusted name in valve automation and industrial innovation across multiple sectors.”



## INDUSTRIES WE SERVE



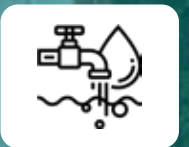
## ENERGY & POWER



## OIL & GAS

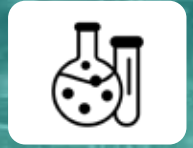


## MARINE & DEFENSE



## WATER & WASTEWATER MANAGEMENT





## CHEMICAL & PROCESS INDUSTRIES



## HEALTHCARE & OXYGEN PLANTS



## STEEL & METALLURGY



## BUILDING AUTOMATION & HVAC



## PHARMACEUTICALS & FOOD PROCESSING



شهادة - Certificate - Сертификат - 證明書 - Certificat - 증명서

Form QAT\_10-M05, version 00, effective since March 25th, 2020

Certificate of Compliance



No. 2P210513.SCUN51

Certificate's Holder: SDTORK Controls Pvt. Ltd. Gat No. 94/2, Plot No. 2, Alandi Markal Road, Village - Dhanore, Tal - Khed, Dist. Pune - 412 105, Maharashtra, India

Certification ECM Mark: European Conformity Type Approved

Product: ELECTRICAL ACTUATORS SUPPLEMENTARY ATTACHEMENT TYPES STARTER TYPES (refer Annexure I for variants under different series)

Model(s): Verification to: Standard: EN 15714-2:2009, EN 61000-3-2:2014, EN 61000-3-3:2014

related to CE Directive(s): 2014/35/EU (Low Voltage) 2014/30/EU (Electromagnetic Compatibility)

Remark: This document has been issued on a voluntary basis and upon request of the manufacturer. It is our opinion that the technical documentation received from the manufacturer is satisfactory for the requirements of the ECM Certification Mark. The conformity mark above can be affixed on the products accordingly to the ECM regulation about its release and its use.

Additional information and clarification about the Marking: The manufacturer is responsible for the CE Marking process, and if necessary, must refer to a Notified Body. This document has been issued on the basis of the regulation on ECM Voluntary Mark for the certification of products. RG01\_ECM rev.3 available at: www.entecerma.it

Issuance date: 13 May 2021 Expiry date: 12 May 2026 Reviewer: Technical expert Amanda Payne Approver: ECM Service Director Luca Bedonni

Ente Certificazione Macchine Srl Via Ca' Bella, 243 - Loc. Castello di Serravalle - 40053 Valsamoggia (BO) - ITALY +39 051 6705141 +39 051 6705156 info@entecerma.it www.entecerma.it

Certificato di esame UE del tipo EU-type examination certificate n. ECM 24 ATEX-B CW80

Rilasciato ai sensi della direttiva 2014/34/UE - Allegato III - Modulo B Issued according to 2014/34/EU Directive - Annex III - Module B

Richiedente Applicant: SDTORK Controls Pvt. Ltd. Ragione Sociale Company Name: SDTORK Controls Pvt. Ltd. Indirizzo Address: Gat No. 94/2, Plot No. 2, Alandi Markal Road, Village - Dhanore, Tal - Khed, Dist. Pune - 412 105, Maharashtra, India

Questa apparecchiatura o sistema di protezione e le sue eventuali varianti accettate sono descritte nel presente Certificato e nell'allegato dello stesso. L'ECM, Organismo Notificato n° 1282, in conformità all'art. 17 della Direttiva 2014/34/UE del Parlamento europeo e del Consiglio del 26 febbraio 2014, certifica che questa apparecchiatura o sistema di protezione verificata secondo la procedura di cui all'allegato III, Modulo B, è conforme ai requisiti essenziali di sicurezza e salute per il progetto e la costruzione di apparecchiature e sistemi di protezione destinati ad essere utilizzati in atmosfere potenzialmente esplosive, definiti nell'allegato II della Direttiva. Le verifiche ed i risultati di prova sono registrati nel rapporto a carattere riservato n° PRD 2024 CW80. I requisiti essenziali di sicurezza e salute sono assicurati dalla rispondenza alle Norme applicate: IEC-60079-0:2017/EN 60079-0:2018, IEC-60079-1:2014/EN 60079-1:2014. Questo Certificato di esame UE del tipo è relativo soltanto al progetto, all'esame ed alle prove dell'apparecchiatura o sistema di protezione specificato in accordo con la Direttiva 2014/34/UE. Ulteriori requisiti di questa Direttiva si applicano al processo di produzione e fornitura dell'apparecchiatura o sistema di protezione: questi requisiti non sono oggetto del presente certificato.

L'apparecchiatura o il sistema di protezione deve riportare i seguenti contrassegni: The equipment shall be marked with the following symbols: Ex II 2 G Ex d IIC T6 Gb IP 66, -20°C ≤ Ta ≤ +40°C Ex II 2 G Ex d IIC T6 Gb IP 68, -20°C ≤ Ta ≤ +40°C Ex II 2 G Ex d IIC T5 Gb IP 68, -20°C ≤ Ta ≤ +40°C Ex II 2 G Ex d IIC T6 Gb IP 68, -20°C ≤ Ta ≤ +40°C Ex II 2 G Ex d IIC T5 Gb IP 67, -20°C ≤ Ta ≤ +40°C Ex II 2 G Ex d IIC T6 Gb IP 68, -20°C ≤ Ta ≤ +40°C Ex II 2 G Ex d IIC T5 Gb IP 68, -20°C ≤ Ta ≤ +40°C

Data di emissione - Emission date: 16/03/2018 Data di estensione scopo - Scope extension date: 18/08/2021 Data di rinnovo - Renewal date: 08/10/2024 Firma autorizzata Authorized signature: Amanda Payne (Disputa Arbitrale)

Questo certificato, incluso l'allegato, può essere riprodotto solo integralmente e senza alcuna variazione. This certificate, annex included, can only be reproduced in its entirety and without any change.

Ente Certificazione Macchine srl Via Ca' Bella 243 - Loc. Castello di Serravalle - 40053 Valsamoggia (BO) +39 0516705141 +39 0516705156 ecm@entecerma.it www.entecerma.it



## Notifica della Garanzia di Qualità dei Prodotti

Notification of the Product Quality Assurance

### n. ECM 24 ATEX-E CW81

Rilasciato ai sensi della direttiva 2014/34/UE - Allegato VII - Modulo E  
Issued according to 2014/34/EU directive - Annex VII - Module E

<p><b>Richiedente</b> Applicant Ragione Sociale Company Name Indirizzo Address Località Place Apparecchiatura Equipment Modo di protezione Type of protection</p>	<p>SDTORK Controls Pvt. Ltd. Gat No. 94/2, Plot No. 2, Alandi Markal Road, Village - Dhanore, Tal - Khed, Dist. Pune - 412 105, Maharashtra India (see the following annex)</p>
---	---

<p>1. II 2 G Ex d IIC T6 Gb IP 66, -20°C s Ta ≤ +40°C 2. II 2 G Ex d IIC T6 Gb IP 66, -20°C s Ta ≤ +40°C 3. II 2 G Ex d IIC T6 Gb IP 66, -20°C s Ta ≤ +40°C 4. II 2 G Ex d IIC T6 Gb IP 67, -20°C s Ta ≤ +40°C</p>	<p>5. II 2 G Ex d IIC T6 Gb IP 68, -20°C s Ta ≤ +40°C 6. II 2 G Ex d IIC T5 Gb IP 68, -20°C s Ta ≤ +40°C 7. II 2 G Ex d IIC T5 Gb IP 68, -20°C s Ta ≤ +40°C 8. II 2 G Ex d IIC T5 Gb IP 68, -20°C s Ta ≤ +40°C</p>
--	--

**ECM, Organismo Notificato n° 1282** in conformità all'art. 17 della Direttiva 2014/34/UE del Parlamento europeo e del Consiglio del 26 febbraio 2014, notifica al richiedente che il sistema di qualità della produzione conforme a quanto previsto dall'allegato VII, Modulo E, della Direttiva. Nell'allegato aggiornato sono elencati tutti gli apparecchi ed i sistemi di protezione con i numeri dei certificati. Questo certificato è basato sul rapporto di verifica ispettiva n. PRD 2024 CW81 emesso il 05/10/2024. I risultati delle verifiche periodiche del sistema qualità sono parte integrante di questa notifica. Questo Certificato di Notifica della garanzia di qualità della produzione è valido fino al 07/10/2027 e può essere ritirato se il sistema di qualità della produzione non è più conforme a quanto previsto dall'allegato VII. In accordo con l'articolo 16 paragrafo 3 della Direttiva 2014/34/UE la marcatura CE sul prodotto deve essere seguita da n. 1282 che identifica l'Organismo Notificato incaricato della sorveglianza della produzione.

**ECM, Notified Body No. 1282** in accordance with Article 17 of Directive 2014/34/EU of the European Parliament and of the Council of 26 February 2014, notifies to the applicant that the manufacturer has a product quality system complies with Annex VII, Module E, of the Directive. Updated Annex lists all equipment and protective systems with the numbers of certificates. This certificate is based on the audit report no. PRD 2024 CW81 dated 05/10/2024. The results of periodic audits of the quality system is an integral part of this notification. This Certificate of Notification of product quality assurance is valid until 07/10/2027 and can be withdrawn if surveillance audits show that the quality system of product no longer complies with the provisions in Annex VII. In accordance with Article 16 paragraph 3 of Directive 2014/34/EU the CE marking must be followed by n. 1282 that identifies the notified body responsible for supervising the production.


**Esempio di marcatura**  
Marking example

Data di prima emissione / Date of first issue: 16/03/2018  
 Estensione - Extension  
 Rinnovo - Renewal

Valsamoggia (BO) / Data - Date: 08/10/2024  
 Firma autorizzata / Authorized signature:   
 Timbro:   
 Scadenza - Expiry date: 07/10/2027

Questo certificato, compreso l'allegato, può essere riprodotto solo integralmente e senza alcuna variazione. This certificate, annex included, may only be reproduced in its entirety and without any change.

**Ente Certificazione Macchine srl**  
 Via Ca' Bella 243 - Loc. Castello di Serravalle - 40053 Valsamoggia (BO)  
 ☎ +39 0516705141 ☎ +39 0516705156 ✉ ecm@entecermi.it www.entecermi.it




## The Automotive Research Association of India

(Research Institute of the Automobile Industry with Ministry of Heavy Industries & Public Enterprises, Govt. of India)

### DEVELOPMENT TEST REPORT

Report No. ARAI/AED/20212022/3100011259/DT/1133      CONFIDENTIAL  
Dated: 08-NOV-2021

1.0	Name and address of the customer	SDTORK CONTROLS PRIVATE LIMITED PLOT NO.2,GAT NO.94/2, ALANDI-MARKAL ROAD DHANORE, PUNE PUNE-412105	
2.0	Customer letter reference	PO NO:- SCPL/PO/21-22/00419 , DATED 4-Oct-2021	
3.0	Description of the Device Under Test (DUT)	DUT Name	3 Phase Electrical Actuator+ Flameproof Reversible Starter
		Manufacture Name	SDTORK CONTROLS PRIVATE LIMITED
		Model Name	3 Phase Electrical Actuator+ Flameproof Reversible Starter
		Model No	SD-3000-20-WG60
		Part No.	SD-3000-3001/08-10-20/WG40-WG60
		Drawing No	GA-SD-3000-20-WG60-E
4.0	Test objective	To carry out EMI/EMC tests as per details given in table 7.0	
5.0	Condition of the test component	The test component was received in good condition.	



A S MADALGI MANAGER	A A PAPADE By GENERAL MANAGER	M M DESAI GENERAL MANAGER
------------------------	----------------------------------	------------------------------

Page 1 of 8



## Indian Register of Shipping

CERTIFICATE NO: 2021AC080

### TYPE APPROVAL CERTIFICATE

This is to certify that the product is in accordance with the applicable rules/standards/codes as described below. The product is considered to be suitable for use in marine applications and is included in the list of approved products.

MANUFACTURER	SDTORK CONTROLS PVT.LTD.
REGISTERED OFFICE & WORKS	Gat No. 94/2, Plot No. 2, Alandi Markal Road, Dhanore Village, Taluka - Khed, Pune - 412 105, Maharashtra, India
PRODUCT NAME	ELECTRICAL ACTUATORS
MODEL NO. / TRADE NAME	SD-3001-08-WG 40 SD-3000-20-WG 60 SD-3000-20-WG 60
PRODUCT DESCRIPTION	Relay Multistep Electrical Actuators with Quarter Turn Worm Gear Box and Reversible Starter
APPLICABLE RULES/STANDARDS/CODES	IS Rules and Regulations for the Construction and Classification of Steel Ships
CONDITIONS OF APPROVAL	See Annexure - I
VALIDITY	The Certificate is valid until 08/12/2026

ISSUE DATE: 20/12/2021  
PLACE: MUMBAI

  
 Principal Surveyor

Form No. TA\_CL\_R.5



## BSCIC

# Certificate

QUALITY MANAGEMENT SYSTEM

This is to certify that:

### SDTORK CONTROLS PVT. LTD.

GAT NO. 94 / 2, PLOT NO. 2, ALANDI MARKAL ROAD  
VILLAGE - DHANORE, TAL. - KHED, PUNE-412105  
MAHARASHTRA, INDIA

whereby granted the Certificate number: **BN18488/17687** (Rev. 02)

Subsequent to the Assessment of the organization, it has been found to be operating a Quality Management System which complies with the requirements of

### ISO 9001:2015

For the following scope:

### Design, Manufacture, Supply, Installation and Commissioning of Electrical Actuator

IAF Scope: 19

For BSCIC CERTIFICATIONS PVT.LTD.

Originally Registered: 16-Nov-2018      1st Surveillance Due on: 24-Aug-2025  
 Issue Date: 18-Sep-2024      2nd Surveillance Due on: 24-Aug-2026  
 Expiry Date: 16-Nov-2027

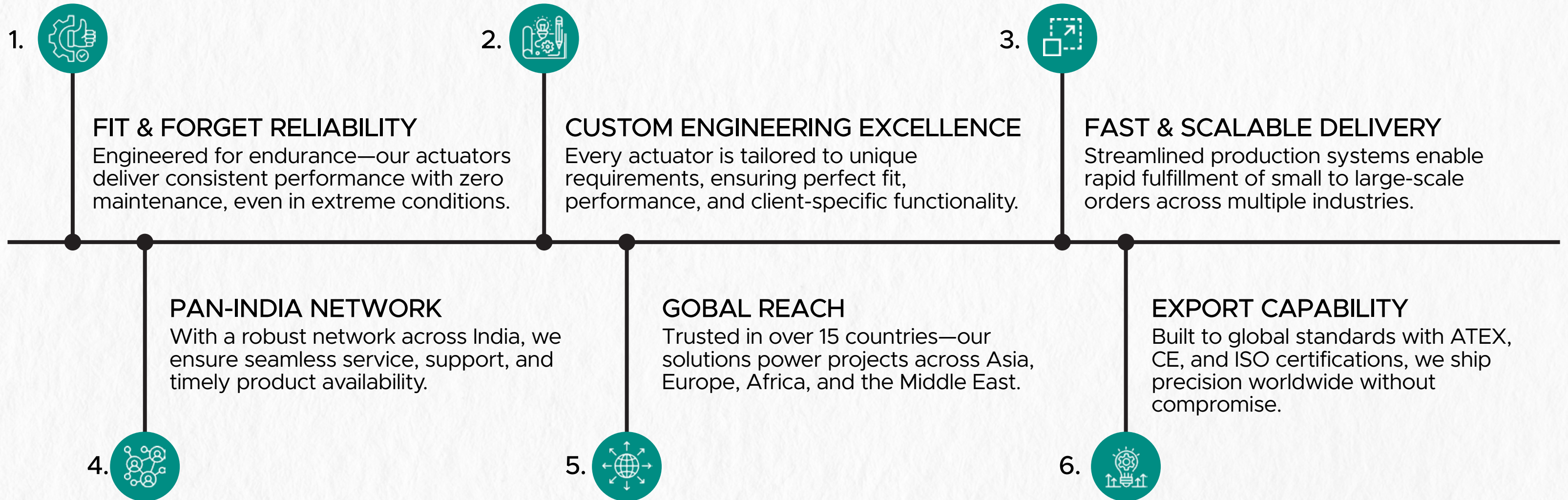
Sangeet Desai  
Managing Director

On case of Surveillance Audit is not allowed to be conducted, this Certificate shall be Suspended/Withdrawn.

Please Revise the certificate only at the discretion of BSCIC CERTIFICATIONS PVT.LTD.  
 The Certificate of Registration is granted subject to retention of records of the BSCIC CERTIFICATIONS PVT. LTD. System Form-3. Issued by the Registrar of BSCIC Certifications, Mumbai. For details of the conditions of use of this certificate, please refer to the BSCIC CERTIFICATIONS PVT. LTD. Terms and Conditions of Use. BSCIC International Office, 10/F, 12/F, 13/F, 14/F, 15/F, 16/F, 17/F, 18/F, 19/F, 20/F, 21/F, 22/F, 23/F, 24/F, 25/F, 26/F, 27/F, 28/F, 29/F, 30/F, 31/F, 32/F, 33/F, 34/F, 35/F, 36/F, 37/F, 38/F, 39/F, 40/F, 41/F, 42/F, 43/F, 44/F, 45/F, 46/F, 47/F, 48/F, 49/F, 50/F, 51/F, 52/F, 53/F, 54/F, 55/F, 56/F, 57/F, 58/F, 59/F, 60/F, 61/F, 62/F, 63/F, 64/F, 65/F, 66/F, 67/F, 68/F, 69/F, 70/F, 71/F, 72/F, 73/F, 74/F, 75/F, 76/F, 77/F, 78/F, 79/F, 80/F, 81/F, 82/F, 83/F, 84/F, 85/F, 86/F, 87/F, 88/F, 89/F, 90/F, 91/F, 92/F, 93/F, 94/F, 95/F, 96/F, 97/F, 98/F, 99/F, 100/F, 101/F, 102/F, 103/F, 104/F, 105/F, 106/F, 107/F, 108/F, 109/F, 110/F, 111/F, 112/F, 113/F, 114/F, 115/F, 116/F, 117/F, 118/F, 119/F, 120/F, 121/F, 122/F, 123/F, 124/F, 125/F, 126/F, 127/F, 128/F, 129/F, 130/F, 131/F, 132/F, 133/F, 134/F, 135/F, 136/F, 137/F, 138/F, 139/F, 140/F, 141/F, 142/F, 143/F, 144/F, 145/F, 146/F, 147/F, 148/F, 149/F, 150/F, 151/F, 152/F, 153/F, 154/F, 155/F, 156/F, 157/F, 158/F, 159/F, 160/F, 161/F, 162/F, 163/F, 164/F, 165/F, 166/F, 167/F, 168/F, 169/F, 170/F, 171/F, 172/F, 173/F, 174/F, 175/F, 176/F, 177/F, 178/F, 179/F, 180/F, 181/F, 182/F, 183/F, 184/F, 185/F, 186/F, 187/F, 188/F, 189/F, 190/F, 191/F, 192/F, 193/F, 194/F, 195/F, 196/F, 197/F, 198/F, 199/F, 200/F, 201/F, 202/F, 203/F, 204/F, 205/F, 206/F, 207/F, 208/F, 209/F, 210/F, 211/F, 212/F, 213/F, 214/F, 215/F, 216/F, 217/F, 218/F, 219/F, 220/F, 221/F, 222/F, 223/F, 224/F, 225/F, 226/F, 227/F, 228/F, 229/F, 230/F, 231/F, 232/F, 233/F, 234/F, 235/F, 236/F, 237/F, 238/F, 239/F, 240/F, 241/F, 242/F, 243/F, 244/F, 245/F, 246/F, 247/F, 248/F, 249/F, 250/F, 251/F, 252/F, 253/F, 254/F, 255/F, 256/F, 257/F, 258/F, 259/F, 260/F, 261/F, 262/F, 263/F, 264/F, 265/F, 266/F, 267/F, 268/F, 269/F, 270/F, 271/F, 272/F, 273/F, 274/F, 275/F, 276/F, 277/F, 278/F, 279/F, 280/F, 281/F, 282/F, 283/F, 284/F, 285/F, 286/F, 287/F, 288/F, 289/F, 290/F, 291/F, 292/F, 293/F, 294/F, 295/F, 296/F, 297/F, 298/F, 299/F, 300/F, 301/F, 302/F, 303/F, 304/F, 305/F, 306/F, 307/F, 308/F, 309/F, 310/F, 311/F, 312/F, 313/F, 314/F, 315/F, 316/F, 317/F, 318/F, 319/F, 320/F, 321/F, 322/F, 323/F, 324/F, 325/F, 326/F, 327/F, 328/F, 329/F, 330/F, 331/F, 332/F, 333/F, 334/F, 335/F, 336/F, 337/F, 338/F, 339/F, 340/F, 341/F, 342/F, 343/F, 344/F, 345/F, 346/F, 347/F, 348/F, 349/F, 350/F, 351/F, 352/F, 353/F, 354/F, 355/F, 356/F, 357/F, 358/F, 359/F, 360/F, 361/F, 362/F, 363/F, 364/F, 365/F, 366/F, 367/F, 368/F, 369/F, 370/F, 371/F, 372/F, 373/F, 374/F, 375/F, 376/F, 377/F, 378/F, 379/F, 380/F, 381/F, 382/F, 383/F, 384/F, 385/F, 386/F, 387/F, 388/F, 389/F, 390/F, 391/F, 392/F, 393/F, 394/F, 395/F, 396/F, 397/F, 398/F, 399/F, 400/F, 401/F, 402/F, 403/F, 404/F, 405/F, 406/F, 407/F, 408/F, 409/F, 410/F, 411/F, 412/F, 413/F, 414/F, 415/F, 416/F, 417/F, 418/F, 419/F, 420/F, 421/F, 422/F, 423/F, 424/F, 425/F, 426/F, 427/F, 428/F, 429/F, 430/F, 431/F, 432/F, 433/F, 434/F, 435/F, 436/F, 437/F, 438/F, 439/F, 440/F, 441/F, 442/F, 443/F, 444/F, 445/F, 446/F, 447/F, 448/F, 449/F, 450/F, 451/F, 452/F, 453/F, 454/F, 455/F, 456/F, 457/F, 458/F, 459/F, 460/F, 461/F, 462/F, 463/F, 464/F, 465/F, 466/F, 467/F, 468/F, 469/F, 470/F, 471/F, 472/F, 473/F, 474/F, 475/F, 476/F, 477/F, 478/F, 479/F, 480/F, 481/F, 482/F, 483/F, 484/F, 485/F, 486/F, 487/F, 488/F, 489/F, 490/F, 491/F, 492/F, 493/F, 494/F, 495/F, 496/F, 497/F, 498/F, 499/F, 500/F, 501/F, 502/F, 503/F, 504/F, 505/F, 506/F, 507/F, 508/F, 509/F, 510/F, 511/F, 512/F, 513/F, 514/F, 515/F, 516/F, 517/F, 518/F, 519/F, 520/F, 521/F, 522/F, 523/F, 524/F, 525/F, 526/F, 527/F, 528/F, 529/F, 530/F, 531/F, 532/F, 533/F, 534/F, 535/F, 536/F, 537/F, 538/F, 539/F, 540/F, 541/F, 542/F, 543/F, 544/F, 545/F, 546/F, 547/F, 548/F, 549/F, 550/F, 551/F, 552/F, 553/F, 554/F, 555/F, 556/F, 557/F, 558/F, 559/F, 560/F, 561/F, 562/F, 563/F, 564/F, 565/F, 566/F, 567/F, 568/F, 569/F, 570/F, 571/F, 572/F, 573/F, 574/F, 575/F, 576/F, 577/F, 578/F, 579/F, 580/F, 581/F, 582/F, 583/F, 584/F, 585/F, 586/F, 587/F, 588/F, 589/F, 590/F, 591/F, 592/F, 593/F, 594/F, 595/F, 596/F, 597/F, 598/F, 599/F, 600/F, 601/F, 602/F, 603/F, 604/F, 605/F, 606/F, 607/F, 608/F, 609/F, 610/F, 611/F, 612/F, 613/F, 614/F, 615/F, 616/F, 617/F, 618/F, 619/F, 620/F, 621/F, 622/F, 623/F, 624/F, 625/F, 626/F, 627/F, 628/F, 629/F, 630/F, 631/F, 632/F, 633/F, 634/F, 635/F, 636/F, 637/F, 638/F, 639/F, 640/F, 641/F, 642/F, 643/F, 644/F, 645/F, 646/F, 647/F, 648/F, 649/F, 650/F, 651/F, 652/F, 653/F, 654/F, 655/F, 656/F, 657/F, 658/F, 659/F, 660/F, 661/F, 662/F, 663/F, 664/F, 665/F, 666/F, 667/F, 668/F, 669/F, 670/F, 671/F, 672/F, 673/F, 674/F, 675/F, 676/F, 677/F, 678/F, 679/F, 680/F, 681/F, 682/F, 683/F, 684/F, 685/F, 686/F, 687/F, 688/F, 689/F, 690/F, 691/F, 692/F, 693/F, 694/F, 695/F, 696/F, 697/F, 698/F, 699/F, 700/F, 701/F, 702/F, 703/F, 704/F, 705/F, 706/F, 707/F, 708/F, 709/F, 710/F, 711/F, 712/F, 713/F, 714/F, 715/F, 716/F, 717/F, 718/F, 719/F, 720/F, 721/F, 722/F, 723/F, 724/F, 725/F, 726/F, 727/F, 728/F, 729/F, 730/F, 731/F, 732/F, 733/F, 734/F, 735/F, 736/F, 737/F, 738/F, 739/F, 740/F, 741/F, 742/F, 743/F, 744/F, 745/F, 746/F, 747/F, 748/F, 749/F, 750/F, 751/F, 752/F, 753/F, 754/F, 755/F, 756/F, 757/F, 758/F, 759/F, 760/F, 761/F, 762/F, 763/F, 764/F, 765/F, 766/F, 767/F, 768/F, 769/F, 770/F, 771/F, 772/F, 773/F, 774/F, 775/F, 776/F, 777/F, 778/F, 779/F, 780/F, 781/F, 782/F, 783/F, 784/F, 785/F, 786/F, 787/F, 788/F, 789/F, 790/F, 791/F, 792/F, 793/F, 794/F, 795/F, 796/F, 797/F, 798/F, 799/F, 800/F, 801/F, 802/F, 803/F, 804/F, 805/F, 806/F, 807/F, 808/F, 809/F, 810/F, 811/F, 812/F, 813/F, 814/F, 815/F, 816/F, 817/F, 818/F, 819/F, 820/F, 821/F, 822/F, 823/F, 824/F, 825/F, 826/F, 827/F, 828/F, 829/F, 830/F, 831/F, 832/F, 833/F, 834/F, 835/F, 836/F, 837/F, 838/F, 839/F, 840/F, 841/F, 842/F, 843/F, 844/F, 845/F, 846/F, 847/F, 848/F, 849/F, 850/F, 851/F, 852/F, 853/F, 854/F, 855/F, 856/F, 857/F, 858/F, 859/F, 860/F, 861/F, 862/F, 863/F, 864/F, 865/F, 866/F, 867/F, 868/F, 869/F, 870/F, 871/F, 872/F, 873/F, 874/F, 875/F, 876/F, 877/F, 878/F, 879/F, 880/F, 881/F, 882/F, 883/F, 884/F, 885/F, 886/F, 887/F, 888/F, 889/F, 890/F, 891/F, 892/F, 893/F, 894/F, 895/F, 896/F, 897/F, 898/F, 899/F, 900/F, 901/F, 902/F, 903/F, 904/F, 905/F, 906/F, 907/F, 908/F, 909/F, 910/F, 911/F, 912/F, 913/F, 914/F, 915/F, 916/F, 917/F, 918/F, 919/F, 920/F, 921/F, 922/F, 923/F, 924/F, 925/F, 926/F, 927/F, 928/F, 929/F, 930/F, 931/F, 932/F, 933/F, 934/F, 935/F, 936/F, 937/F, 938/F, 939/F, 940/F, 941/F, 942/F, 943/F, 944/F, 945/F, 946/F, 947/F, 948/F, 949/F, 950/F, 951/F, 952/F, 953/F, 954/F, 955/F, 956/F, 957/F, 958/F, 959/F, 960/F, 961/F, 962/F, 963/F, 964/F, 965/F, 966/F, 967/F, 968/F, 969/F, 970/F, 971/F, 972/F, 973/F, 974/F, 975/F, 976/F, 977/F, 978/F, 979/F, 980/F, 981/F, 982/F, 983/F, 984/F, 985/F, 986/F, 987/F, 988/F, 989/F, 990/F, 991/F, 992/F, 993/F, 994/F, 995/F, 996/F, 997/F, 998/F, 999/F, 1000/F, 1001/F, 1002/F, 1003/F, 1004/F, 1005/F, 1006/F, 1007/F, 1008/F, 1009/F, 1010/F, 1011/F, 1012/F, 1013/F, 1014/F, 1015/F, 1016/F, 1017/F, 1018/F, 1019/F, 1020/F, 1021/F, 1022/F, 1023/F, 1024/F, 1025/F, 1026/F, 1027/F, 1028/F, 1029/F, 1030/F, 1031/F, 1032/F, 1033/F, 1034/F, 1035/F, 1036/F, 1037/F, 1038/F, 1039/F, 1040/F, 1041/F, 1042/F, 1043/F, 1044/F, 1045/F, 1046/F, 1047/F, 1048/F, 1049/F, 1050/F, 1051/F, 1052/F, 1053/F, 1054/F, 1055/F, 1056/F, 1057/F, 1058/F, 1059/F, 1060/F, 1061/F, 1062/F, 1063/F, 1064/F, 1065/F, 1066/F, 1067/F, 1068/F, 1069/F, 1070/F, 1071/F, 1072/F, 1073/F, 1074/F, 1075/F, 1076/F, 1077/F, 1078/F, 1079/F, 1080/F, 1081/F, 1082/F, 1083/F, 1084/F, 1085/F, 1086/F, 1087/F, 1088/F, 1089/F, 1090/F, 1091/F, 1092/F, 1093/F, 1094/F, 1095/F, 1096/F, 1097/F, 1098/F, 1099/F, 1100/F, 1101/F, 1102/F, 1103/F, 1104/F, 1105/F, 1106/F, 1107/F, 1108/F, 1109/F, 1110/F, 1111/F, 1112/F, 1113/F, 1114/F, 1115/F, 1116/F, 1117/F, 1118/F, 1119/F, 1120/F, 1121/F, 1122/F, 1123/F, 1124/F, 1125/F, 1126/F, 1127/F, 1128/F, 1129/F, 1130/F, 1131/F, 1132/F, 1133/F, 1134/F, 1135/F, 1136/F, 1137/F, 1138/F, 1139/F, 1140/F, 1141/F, 1142/F, 1143/F, 1144/F, 1145/F, 1146/F, 1147/F, 1148/F, 1149/F, 1150/F, 1151/F, 1152/F, 1153/F, 1154/F, 1155/F, 1156/F, 1157/F, 1158/F, 1159/F, 1160/F, 1161/F, 1162/F, 1163/F, 1164/F, 1165/F, 1166/F, 1167/F, 1168/F, 1169/F, 1170/F, 1171/F, 1172/F, 1173/F, 1174/F, 1175/F, 1176/F, 1177/F, 1178/F, 1179/F, 1180/F, 1181/F, 1182/F, 1183/F, 1184/F, 1185/F, 1186/F, 1187/F, 1188/F, 1189/F, 1190/F, 1191/F, 1192/F, 1193/F, 1194/F, 1195/F, 1196/F, 1197/F, 1198/F, 1199/F, 1200/F, 1201/F, 1202/F, 1203/F, 1204/F, 1205/F, 1206/F, 1207/F, 1208/F, 1209/F, 1210/F, 1211/F, 1212/F, 1213/F, 1214/F, 1215/F, 1216/F, 1217/F, 1218/F, 1219/F, 1220/F, 1221/F, 1222/F, 1223/F, 1224/F, 1225/F, 1226/F, 1227/F, 1228/F, 1229/F, 1230/F, 1231/F, 1232/F, 1233/F, 1234/F, 1235/F, 1236/F, 1237/F, 1238/F, 1239/F, 1240/F, 1241/F, 1242/F, 1243/F, 1244/F, 1245/F, 1246/F, 1247/F, 1248/F, 1249/F, 1250/F, 1251/F, 1252/F, 1253/F, 1254/F, 1255/F, 1256/F, 1257/F, 1258/F, 1259/F, 1260/F, 1261/F, 1262/F, 1263/F, 1264/F, 1265/F, 1266/F, 1267/F, 1268/F, 1269/F, 1270/F, 1271/F, 1272/F, 1273/F, 1274/F, 1275/F, 1276/F, 1277/F, 1278/F, 1279/F, 1280/F, 1281/F, 1282/F, 1283/F, 1284/F, 1285/F, 1286/F, 1287/F, 1288/F, 1289/F, 1290/F, 1291/F, 1292/F, 1293/F, 1294/F, 1295/F, 1296/F, 1297/F, 1298/F, 1299/F, 1300/F, 1301/F, 1302/F, 1303/F, 1304/F, 1305/F, 1306/F, 1307/F, 1308/F, 1309/F, 1310/F, 1311/F, 1312/F, 1313/F, 1314/F, 1315/F, 1316/F, 1317/F, 1318/F, 1319/F, 1320/F, 1321/F, 1322/F, 1323/F, 1324/F, 1325/F, 1326/F, 1327/F, 1328/F, 1329/F, 1330/F, 1331/F, 1332/F, 1333/F, 1334/F, 1335/F, 1336/F, 1337/F, 1338/F, 1339/F, 1340/F, 1341/F, 1342/F, 1343/F, 1344/F, 1345/F, 1346/F, 1347/F, 1348/F, 1349/F, 1350/F, 1351/F, 1352/F, 1353/F, 1354/F, 1355/F, 1356/F, 1357/F, 1358/F, 1359/F, 1360/F, 1361/F, 1362/F, 1363/F, 1364/F, 1365/F, 1366/F, 1367/F, 1368/F, 1369/F, 1370/F, 1371/F, 1372/F, 1373/F, 1374/F, 1375/F, 1376/F, 1377/F, 1378/F, 1379/F, 1380/F, 1381/F, 1382/F, 1383/F, 1384/F, 1385/F, 1386/F, 1387/F, 1388/F, 1389/F, 1390/F, 1391/F, 1392/F, 1393/F, 1394/F, 1395/F, 1396/F, 1397/F, 1398/F, 1399/F, 1400/F, 1401/F, 1402/F, 1403/F, 1404/F, 1405/F, 1406/F, 1407/F,

# WHAT POWERS SDTORK BEHIND EVERY ACTUATOR WE DELIVER.

## **WHY CHOOSE US!**



# Let's Connect



## Our Offices



No.51, Rahman Khan Rd, APMC Yard, Yeshwanthpur Industrial Suburb, Mahalakshmi Layout, Bengaluru, Karnataka 560086



Plot # 67 & 68, Near Govt. ITI College, Magadi Road, Seegehalli, BMTD Depot Road, Bangalore 560112.



Gat No 94/2, Plot No 2, Alandi Markal Road, Village: Dhanore, Tal: Khed, Dist: Pune - 412105, Maharashtra, India.



309, SUNTECK Crest, Opp. Leela Business Park, Off - Andheri Kurla Road, Near Airport Road Metro Station, Mumbai- 400059



SSPDL Building, Navalur, Chennai, Tamil Nadu-603103



Upcoming Factory Parner-414302



+91 98229 80003 / +91 98450 18216



[www.sdtork.com](http://www.sdtork.com)



[scpl@sdtork.com](mailto:scpl@sdtork.com)

Thank  
you